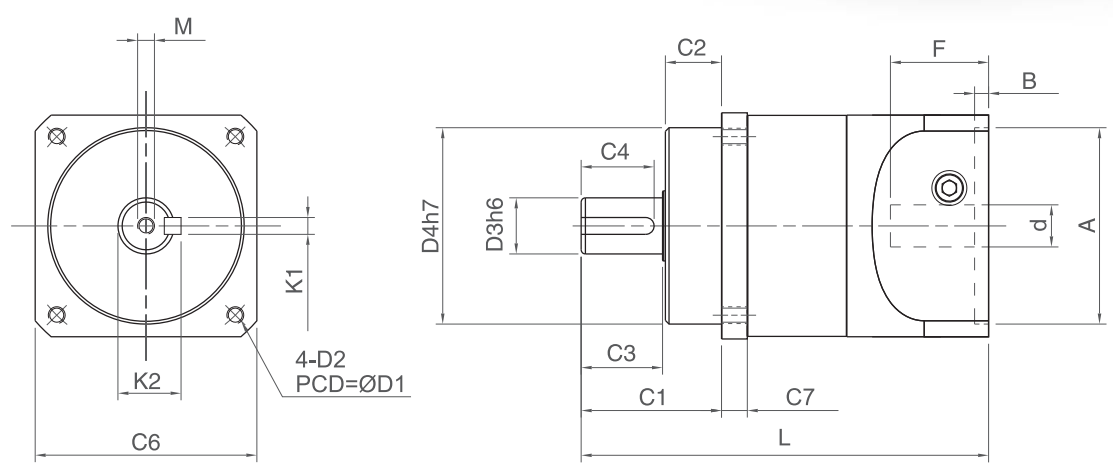


HIGH LOAD CAPACITY, THROUGH HOLE

DNseries

PHT VERTEX PRECISION COMPONENTS CORP.



Unit: mm

Info.	DN060	DN080	DN100
D1	70.0	90.0	115.0
D2	M5	M6	M8
D3	16 (12~16)	19 (18~22)	24 (22~30)
D4	50.0	70.0	90.0
C1	32.0	50.0	55.0
C2	11.0	20.0	14.0
C3	20.0	29.0	40.0
C4	18.0	25.0	35.0
C6	62.0	79.0	98.0
C7	13.5	9.0	15.4
L	L1	116.0	145.0
	L2	136.0	176.0
M	M4 x P0.7 x 15	M6 x P1.0 x 15	M8 x P1.0 x 20
K1	5.0	6.0	8.0
K2	18.0	21.5	27
d	≦ 14.0	≦ 24.0	≦ 28.0
A	30~50	50~80	50~80
B	6.0	6.0	8.0
F	≦ 32.0	≦ 35.0	≦ 47

Information	Stage	Ratio	DN060	DN080	DN100
Defined Output Torque (Nm)	1	4	60	135	306
		5	55	126	292
		7	50	132	285
		9	50	132	285
		10	40	115	260
	2	16	60	135	306
		20	55	126	292
		25	55	126	292
		28	50	132	285
		35	50	132	285
		36	50	132	285
		40	40	115	260
		45	50	132	285
		49	50	132	285
		50	40	115	260
		63	50	132	285
		70	40	115	260
		81	50	132	285
		90	40	115	260
	3	100	55	126	292
Peak Output Torque (Nm)	1, 2, 3	4~100	3 times of Defined Output Torque		
Backlash (arc min)	1	4~10	≤ 10	≤ 10	≤ 10
	2	16~90	≤ 12	≤ 12	≤ 12
Defined Input Speed (RPM)	1	4, 5	3300	3000	2300
		7~10	4000	3300	2700
	2	16~40	4400	3500	3000
		45~63	4800	4000	3300
		70~90	5500	4700	3900
Weight (kg)	1	4~10	1.30	2.30	6.00
	2	16~90	1.60	3.30	7.20
Torsional Rigidity (Nm/arc min)	1, 2	4~90	7.00	8.00	27.00
Allowable Radial Force (N)			2800	7200	8000
Allowable Axial Force (N)			2200	5000	5600
Noise (dB)			65	64	64
Life Time (hrs)			20000		
Temperature (°C)			-15°C~+90°C		
Protection Rank			IP64		
Lubricant	Synthetic Lubricant, ISO VG220				
Mass Moments of Inertia (kg X cm²)	1	4	0.30	0.33	5.09
		5	0.29	0.33	4.93
		7	0.28	0.31	4.83
		9	0.28	0.31	4.83
		10	0.28	0.31	4.83
	2	16	0.30	0.30	5.09
		20	0.30	0.30	5.07
		25	0.29	0.30	4.91
		28	0.30	0.30	5.07
		35	0.30	0.30	4.91
		40	0.27	0.30	4.80
		50	0.27	0.30	4.80
		70	0.27	0.30	4.80
	3	100	0.27	0.30	4.80